



# Offline Help Guide

Configure the application to access offline help files

Visual Components Product Family



## Offline Help

The application help content is hosted online, and accessing it requires an internet connection. With this solution, users can download the help files and make them available for offline use on their local PC.

### Step 1

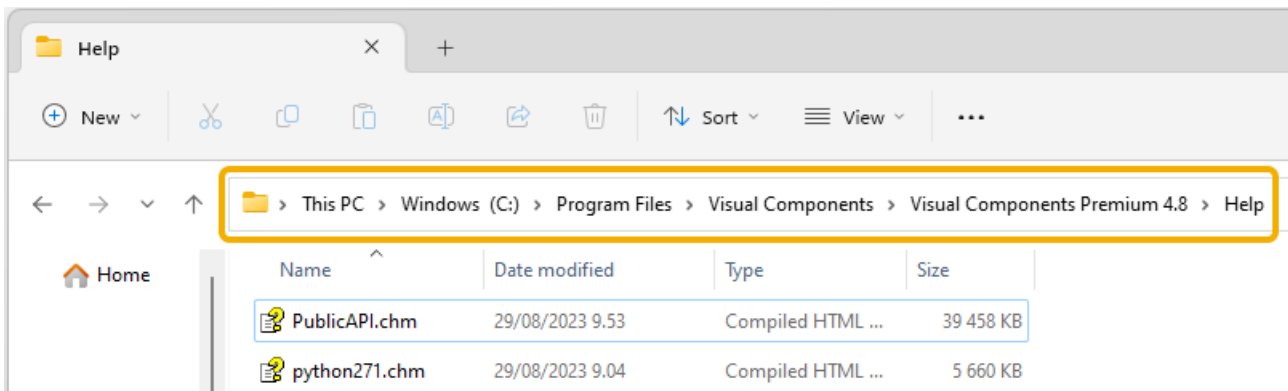
Download the help files that correspond with your installed product:

- Visual Components Essentials
- Visual Components Professional
- Visual Components Premium
- Visual Components Robotics

### Step 2

Locate the *Help* folder inside your product installation directory, for example:

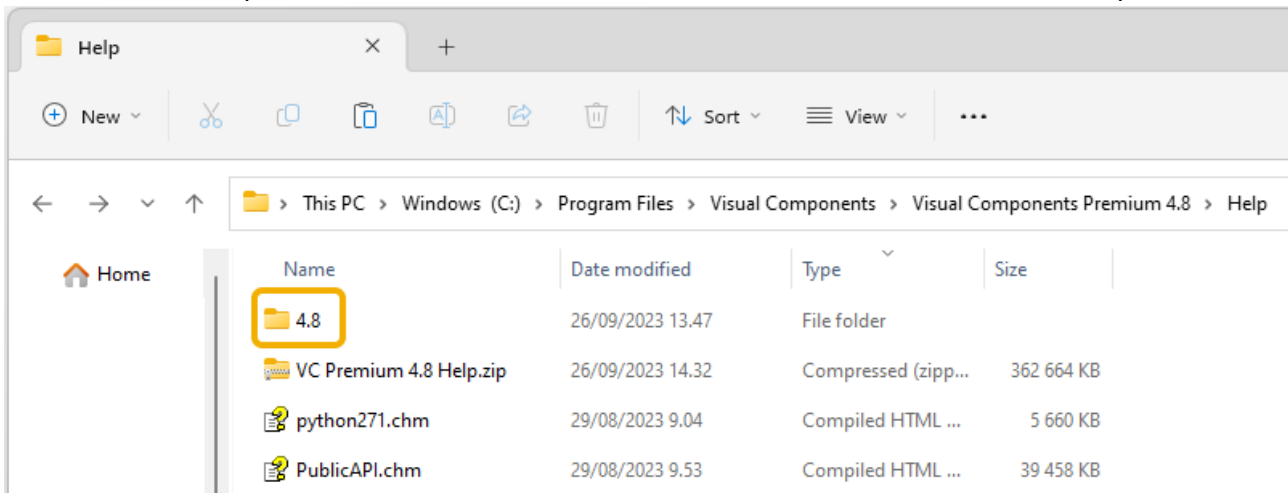
C:\Program Files\Visual Components\Visual Components Premium 4.8\Help



### Step 3

Extract the contents of the downloaded help files to this folder.

**Note:** In this example we extracted a folder named *4.8*, and we can now delete the *.zip* file.

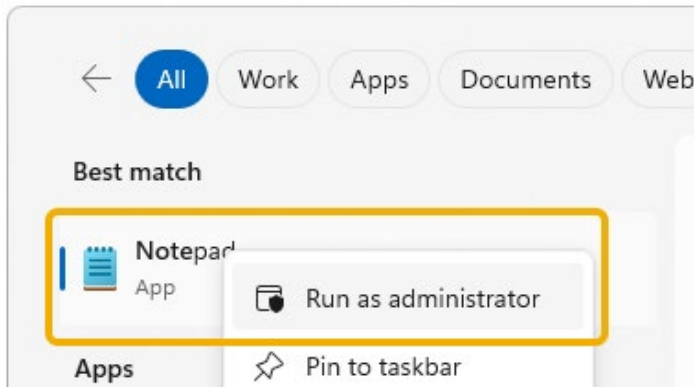


## Step 4

We will now use a text editor, to configure the application to use the help files we just extracted.

**Note:** In this example we will use Notepad, but you can use any text editor you prefer.

1. In Windows search for Notepad, right-click on it and choose **Run as administrator**.

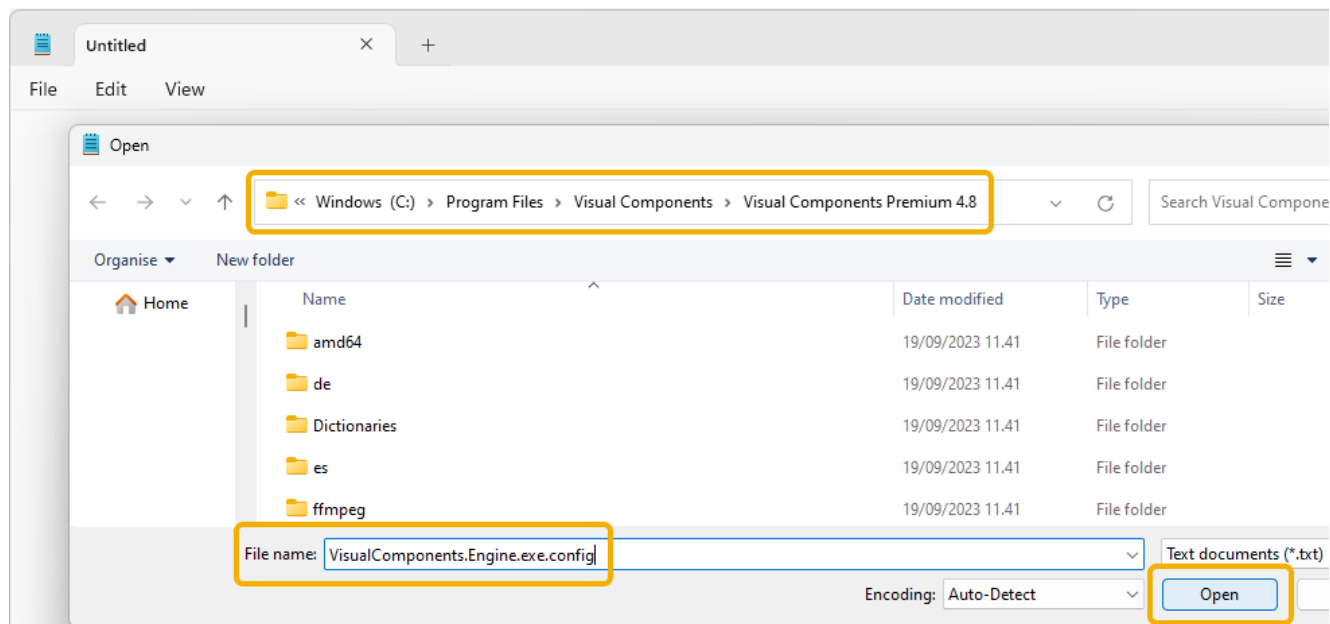


2. Then in Notepad, from the **File** menu, select **Open**, and locate the root of your product installation directory, for example:

C:\Program Files\Visual Components\Visual Components Premium 4.8

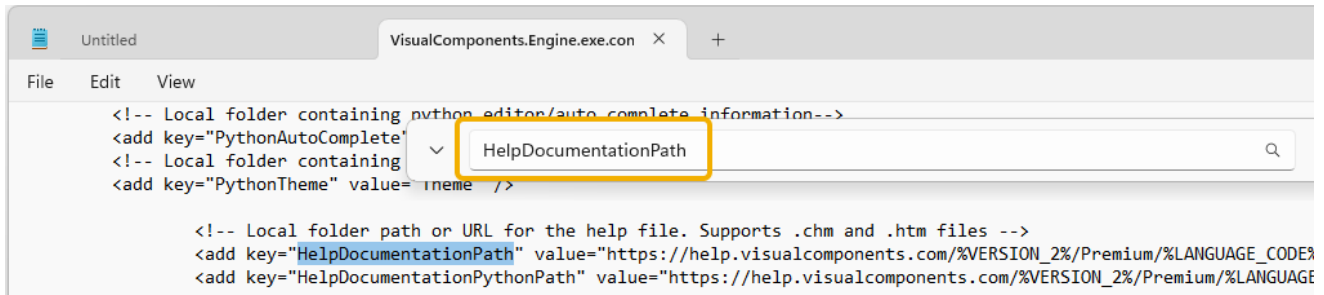
Then enter the **File name:** *VisualComponents.Engine.exe.config* and click **Open**.

**Note:** You can copy and paste the file name above into the **File name:** field.



## Step 5

1. With the *VisualComponents.Engine.exe.config* configuration file open in Notepad, using Ctrl+F to launch the Find option, search for the key *HelpDocumentationPath*.



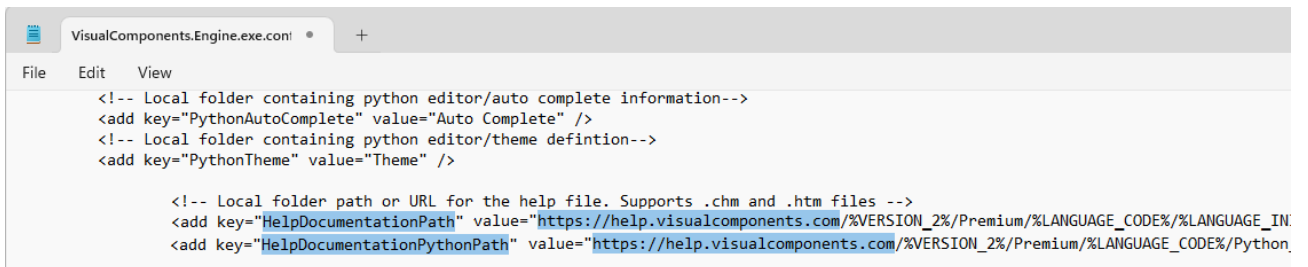
```

<!-- Local folder containing python editor/auto complete information-->
<add key="PythonAutoComplete" value="Auto Complete" />
<!-- Local folder containing python editor/theme definition-->
<add key="PythonTheme" value="Theme" />

<!-- Local folder path or URL for the help file. Supports .chm and .htm files -->
<add key="HelpDocumentationPath" value="https://help.visualcomponents.com/%VERSION_2%/Premium/%LANGUAGE_CODE%/%LANGUAGE_IN%" />
<add key="HelpDocumentationPythonPath" value="https://help.visualcomponents.com/%VERSION_2%/Premium/%LANGUAGE_CODE%/Python/" />

```

2. We are now going to modify the `value=""` attribute of both the `HelpDocumentationPath` and `HelpDocumentationPythonPath` keys replacing the string `https://help.visualcomponents.com`.



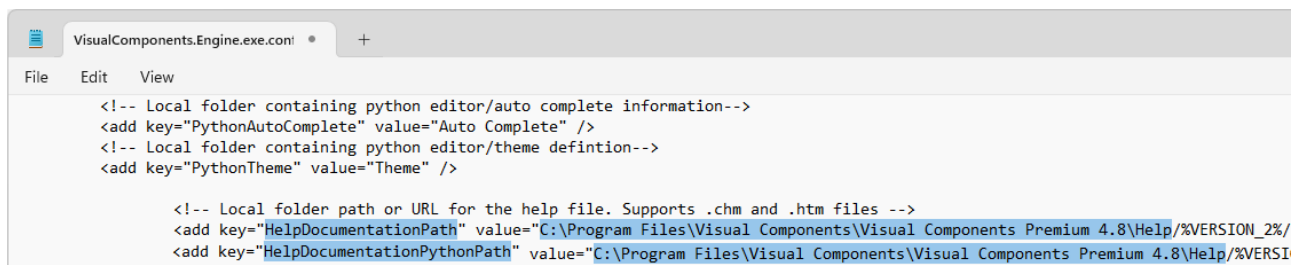
```

<!-- Local folder containing python editor/auto complete information-->
<add key="PythonAutoComplete" value="Auto Complete" />
<!-- Local folder containing python editor/theme definition-->
<add key="PythonTheme" value="Theme" />

<!-- Local folder path or URL for the help file. Supports .chm and .htm files -->
<add key="HelpDocumentationPath" value="https://help.visualcomponents.com/%VERSION_2%/Premium/%LANGUAGE_CODE%/%LANGUAGE_IN%" />
<add key="HelpDocumentationPythonPath" value="https://help.visualcomponents.com/%VERSION_2%/Premium/%LANGUAGE_CODE%/Python/" />

```

3. In the `value=""` attribute for both keys, we will replace the string `https://help.visualcomponents.com` with the path to the folder where we extracted the help files we downloaded e.g.  
`C:\Program Files\Visual Components\Visual Components Premium 4.8\Help`



```

<!-- Local folder containing python editor/auto complete information-->
<add key="PythonAutoComplete" value="Auto Complete" />
<!-- Local folder containing python editor/theme definition-->
<add key="PythonTheme" value="Theme" />

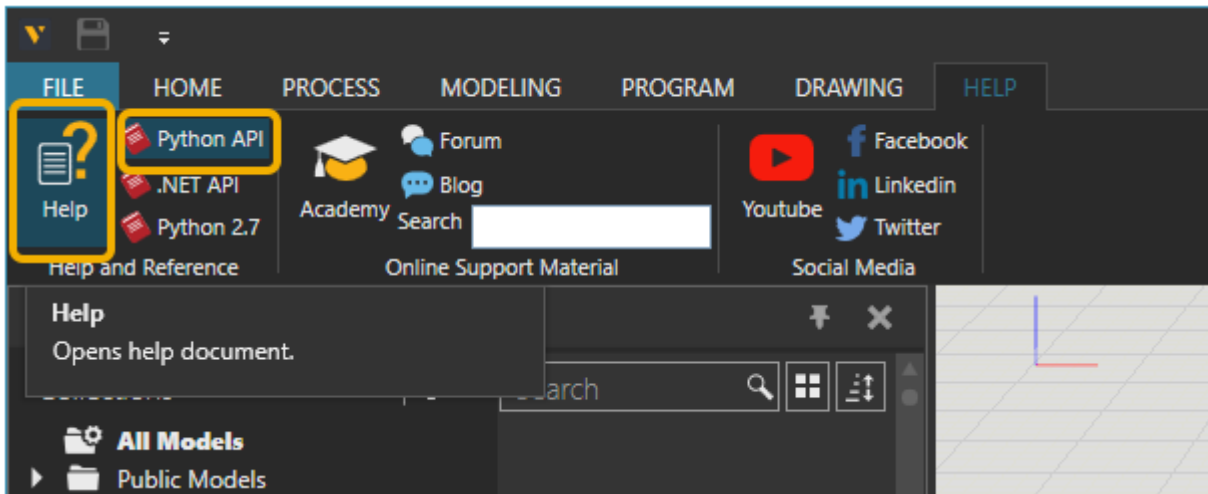
<!-- Local folder path or URL for the help file. Supports .chm and .htm files -->
<add key="HelpDocumentationPath" value="C:\Program Files\Visual Components\Visual Components Premium 4.8\Help/%VERSION_2%/Premium/%LANGUAGE_CODE%/%LANGUAGE_IN%" />
<add key="HelpDocumentationPythonPath" value="C:\Program Files\Visual Components\Visual Components Premium 4.8\Help/%VERSION_2%/Premium/%LANGUAGE_CODE%/Python/" />

```

4. Then save the file and close Notepad.

### Step 6

Then to test the result of the configuration change, launch your application, and to launch help press F1, or from the **HELP** tab click **Help** or **Python API**.



You should now be able to access the help content offline.

